



ESTIVAL™

PRODUCT CATALOG



LEADER IN PREMIUM
SAFETY FOOTWEAR
IN BRAZIL.

www.juldercusa.com - contacto@julderc.com - +1 (321) 284-9412

 **JULDERC**
USA LLC

ESTIVAL

GERMAN TECHNOLOGY AT YOUR FEET.

Founded in Düsseldorf, Germany, as an import and export agent, Estival soon expanded its facilities to the city of Franca-SP, the shoe capital and one of the largest footwear centers in the world.

This expansion allowed access to skilled labor and relationships with the best raw material suppliers in the market. In direct contact with the latest advancements in Europe, Estival has become a REFERENCE IN THE SEGMENT since 1996, when it began producing safety shoes with international quality standards, offering the best in comfort, design, durability, and technology for LARGE MULTINATIONALS.

Equipped with a modern analysis laboratory, a research and development sector, and a quality department, along with highly qualified professionals, Estival launched the ESTIVAL SAFETY SHOES brand in the domestic market in 2011, incorporating into its products all the technology and experience acquired during years of producing footwear OF INTERNATIONAL QUALITY.



OUR PRODUCT LINES



Click on the line you wish
to access.



WORK

RETURN

www.juldercusa.com - contacto@julderc.com - +1 (321) 284-9412

 **JULDERC**
USA LLC

WO1001

LEATHER RELAX



WO1001 BLACK

SOLE ERGONOMIC

Ergonomic dual-density polyurethane sole with rotation points to prevent twisting, adjustment area for work on ladders and scaffolding, and drainage channels.



MIDSOLE: Sturdier layer that comes into direct contact with the ground.

COMPACT: Harder layer that comes into direct contact with the ground.



COMPATIBLE WITH:

TOE CAP
COMPOSITE

ANTI-PENETRATION
INSOLE

COMFORT-E



PREMIUM LEATHER:

The main raw material of this footwear, relaxed embossed leather, is responsible for ensuring durability and resistance. We invest heavily in the selection and finishing of the leathers used in the production of our safety shoes.



REINFORCED STITCHING

Reinforced stitching to increase the durability of the footwear.



COUNTERFOOT

The thermoplastic counterfoot is responsible for structuring and is fundamental for stability while walking.



LINING

Footwear with internal lining made of highly abrasion-resistant material.

AVAILABLE IN THE COLORS:



WO1001 WHITE

RETURN

W1001

LEATHER RELAX



W1001 BLACK

SOLE ERGONOMIC

Ergonomic dual-density polyurethane sole with rotation points to prevent twisting, adjustment area for work on ladders and scaffolding, and drainage channels.



MIDSOLE: Sturdier layer that comes into direct contact with the ground.

COMPACT: Harder layer that comes into direct contact with the ground.



COMPATIBLE WITH:



PREMIUM LEATHER:

The main raw material of this footwear, relaxed embossed leather, is responsible for ensuring durability and resistance. We invest heavily in the selection and finishing of the leathers used in the production of our safety shoes.



ABNT NBR 16603:2017
500 V - SEC0

Footwear certified for use in electrician activities.



REINFORCED STITCHING

Reinforced stitching to increase the durability of the footwear.



COUNTERFORT

The thermoplastic counterfort is responsible for structuring and is fundamental for stability while walking.



LINING

Footwear with internal lining made of highly abrasion-resistant material.

THIS FOOTWEAR DOES NOT HAVE OTHER COLORS.

RETURN

WO1002

LEATHER RELAX



WO1002 BLACK



PREMIUM LEATHER:

The main raw material of this footwear, relaxed embossed leather, is responsible for ensuring durability and resistance. We invest heavily in the selection and finishing of the leathers used in the production of our safety shoes.



REINFORCED STITCHING

Reinforced stitching to increase the durability of the footwear.



COUNTERFORT

The thermoplastic counterfort is responsible for structuring and is fundamental for stability while walking.



LINING

Footwear with internal lining made of highly abrasion-resistant material.

SOLE ERGONOMIC

Ergonomic dual-density polyurethane sole with rotation points to prevent twisting, adjustment area for work on ladders and scaffolding, and drainage channels.



MIDSOLE: Sturdier layer that comes into direct contact with the ground.

COMPACT: Harder layer that comes into direct contact with the ground.

COMPATIBLE WITH:

TOE CAP
COMPOSITE

ANTI-PENETRATION
INSOLE

COMFORT-E

THIS FOOTWEAR DOES NOT HAVE OTHER COLORS.



RETURN

WO1003

LEATHER RELAX



WO1003 COFFEE



PREMIUM LEATHER:

The main raw material of this footwear, relaxed embossed leather, is responsible for ensuring durability and resistance. We invest heavily in the selection and finishing of the leathers used in the production of our safety shoes.



LACE CLOSURE

The closure is made with high-resistance laces.



COUNTERFORT

The thermoplastic counterfort is responsible for structuring and is fundamental for stability while walking.



LINING

Footwear with internal lining made of highly abrasion-resistant material.

SOLE ERGONOMIC

Ergonomic dual-density polyurethane sole with rotation points to prevent twisting, adjustment area for work on ladders and scaffolding, and drainage channels.



MIDSOLE: Sturdier layer that comes into direct contact with the ground.

COMPACT: Harder layer that comes into direct contact with the ground.

COMPATIBLE WITH:

TOE CAP
COMPOSITE

ANTI-PENETRATION
INSOLE

COMFORT-E

AVAILABLE IN THE COLORS:



WO1003 BLACK

RETURN

WO1003

CUERO NOBUCK



WO1003 BROWN



PREMIUM LEATHER:

The main raw material of this footwear, relaxed embossed leather, is responsible for ensuring durability and resistance. We invest heavily in the selection and finishing of the leathers used in the production of our safety shoes.



LACE CLOSURE

The closure is made with high-resistance laces.



COUNTERFORT

The thermoplastic counterfort is responsible for structuring and is fundamental for stability while walking.



LINING

Footwear with internal lining made of highly abrasion-resistant material.

SOLE ERGONOMIC

Ergonomic dual-density polyurethane sole with rotation points to prevent twisting, adjustment area for work on ladders and scaffolding, and drainage channels.



MIDSOLE: Sturdier layer that comes into direct contact with the ground.

COMPACT: Harder layer that comes into direct contact with the ground.

COMPATIBLE WITH:

TOE CAP
COMPOSITE

ANTI-PENETRATION
INSOLE

COMFORT-E

THIS FOOTWEAR DOES NOT HAVE OTHER COLORS.



RETURN

WO1004

LEATHER RELAX



WO1004 BLACK



PREMIUM LEATHER:

The main raw material of this footwear, relaxed embossed leather, is responsible for ensuring durability and resistance. We invest heavily in the selection and finishing of the leathers used in the production of our safety shoes.



LACE CLOSURE

The closure is made with high-resistance laces.



COUNTERFOOT

The thermoplastic counterfoot is responsible for structuring and is fundamental for stability while walking.



LINING

Footwear with internal lining made of highly abrasion-resistant material.

SOLE ERGONOMIC

Ergonomic dual-density polyurethane sole with rotation points to prevent twisting, adjustment area for work on ladders and scaffolding, and drainage channels.



MIDSOLE: Sturdier layer that comes into direct contact with the ground.

COMPACT: Harder layer that comes into direct contact with the ground.



COMPATIBLE WITH:

TOE CAP
COMPOSITE

ANTI-PENETRATION
INSOLE

COMFORT-E

AVAILABLE IN THE COLORS:



WO1004 WHITE

RETURN

WO1009

LEATHER RELAX

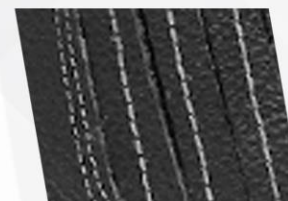


WO1009 BLACK



PREMIUM LEATHER:

The main raw material of this footwear, relaxed embossed leather, is responsible for ensuring durability and resistance. We invest heavily in the selection and finishing of the leathers used in the production of our safety shoes.



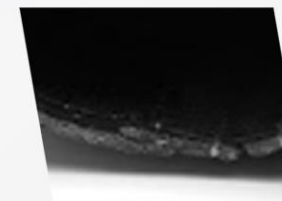
REINFORCED STITCHING

Reinforced stitching to increase the durability of the footwear.



METATARSUS

Metatarsal protector made of thermoplastic material covered with leather.



LINING

Footwear with internal lining made of highly abrasion-resistant material.

SOLE ERGONOMIC

Ergonomic dual-density polyurethane sole with rotation points to prevent twisting, adjustment area for work on ladders and scaffolding, and drainage channels.



MIDSOLE: Sturdier layer that comes into direct contact with the ground.

COMPACT: Harder layer that comes into direct contact with the ground.

COMPATIBLE WITH:

TOE CAP
COMPOSITE

ANTI-PENETRATION
INSOLE

COMFORT-E

THIS FOOTWEAR DOES NOT HAVE OTHER COLORS.



RETURN

WO1011

LEATHER RELAX



WO1011 BLACK



PREMIUM LEATHER:

The main raw material of this footwear, relaxed embossed leather, is responsible for ensuring durability and resistance. We invest heavily in the selection and finishing of the leathers used in the production of our safety shoes.



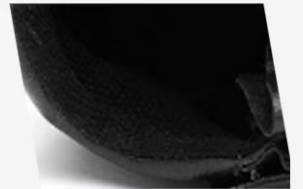
REINFORCED STITCHING

Reinforced stitching to increase the durability of the footwear.



LACE CLOSURE

The closure is made with high-resistance laces.



LINING

Footwear with internal lining made of highly abrasion-resistant material.

SOLE ERGONOMIC

Ergonomic dual-density polyurethane sole with rotation points to prevent twisting, adjustment area for work on ladders and scaffolding, and drainage channels.



MIDSOLE: Sturdier layer that comes into direct contact with the ground.

COMPACT: Harder layer that comes into direct contact with the ground.



COMPATIBLE WITH:

TOE CAP
COMPOSITE

ANTI-PENETRATION
INSOLE

COMFORT-E

THIS FOOTWEAR DOES NOT HAVE OTHER COLORS.

RETURN

WO1017

LEATHER RELAX



WO1017 BLACK



PREMIUM LEATHER:

The main raw material of this footwear, relaxed embossed leather, is responsible for ensuring durability and resistance. We invest heavily in the selection and finishing of the leathers used in the production of our safety shoes.



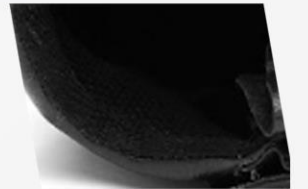
REINFORCED STITCHING

Reinforced stitching to increase the durability of the footwear.



VELCRO

Gusseted tongue and Velcro closure.



LINING

Footwear with internal lining made of highly abrasion-resistant material.

SOLE ERGONOMIC

Ergonomic dual-density polyurethane sole with rotation points to prevent twisting, adjustment area for work on ladders and scaffolding, and drainage channels.



MIDSOLE: Sturdier layer that comes into direct contact with the ground.

COMPACT: Harder layer that comes into direct contact with the ground.

COMPATIBLE WITH:

TOE CAP
COMPOSITE

ANTI-PENETRATION
INSOLE

COMFORT-E

THIS FOOTWEAR DOES NOT HAVE OTHER COLORS.



RETURN

WO1018

LEATHER RELAX



WO1018 COFFEE



PREMIUM LEATHER:

The main raw material of this footwear, relaxed embossed leather, is responsible for ensuring durability and resistance. We invest heavily in the selection and finishing of the leathers used in the production of our safety shoes.



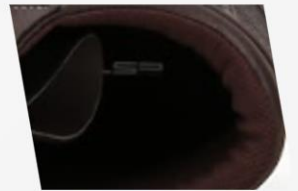
REINFORCED STITCHING

Reinforced stitching to increase the durability of the footwear.



VELCRO

Gusseted tongue and Velcro closure.



LINING

Footwear with internal lining made of highly abrasion-resistant material.

SOLE ERGONOMIC

Ergonomic dual-density polyurethane sole with rotation points to prevent twisting, adjustment area for work on ladders and scaffolding, and drainage channels.



MIDSOLE: Sturdier layer that comes into direct contact with the ground.

COMPACT: Harder layer that comes into direct contact with the ground.



COMPATIBLE WITH:

TOE CAP
COMPOSITE

ANTI-PENETRATION
INSOLE

COMFORT-E

THIS FOOTWEAR DOES NOT HAVE OTHER COLORS.

RETURN

WO2000

CUERO NOBUCK



WO2000 BROWN



PREMIUM LEATHER:

The main raw material of this footwear, relaxed embossed leather, is responsible for ensuring durability and resistance. We invest heavily in the selection and finishing of the leathers used in the production of our safety shoes.



REINFORCED STITCHING

Reinforced stitching to increase the durability of the footwear.



LACE CLOSURE

The closure is made with high-resistance laces.



LINING

Footwear with internal lining made of highly abrasion-resistant material.

SOLE ERGONOMIC

Ergonomic dual-density polyurethane sole with rotation points to prevent twisting, adjustment area for work on ladders and scaffolding, and drainage channels.



MIDSOLE: Sturdier layer that comes into direct contact with the ground.

COMPACT: Harder layer that comes into direct contact with the ground.

COMPATIBLE WITH:

TOE CAP
COMPOSITE

ANTI-PENETRATION
INSOLE

COMFORT-E

THIS FOOTWEAR DOES NOT HAVE OTHER COLORS.



RETURN

WO1001

MICROFIBER



WO1001 BLACK/RED

Microfiber MICRO-E offers::

- Sustainability as it is an ecological raw material.
- Lightweight, as it can be up to 40% lighter than leather.
- Resistance to liquid ingress.
- Flexibility, allowing it to adapt to the contour of the feet.
- Increased durability, being up to 30% more resistant than leather to tearing and abrasion.
- Extreme resistance against light chemicals such as cement, lime, oils, and grease.
- Easy to clean.



Footwear certified for use in electrician activities.



REINFORCED STITCHING

Reinforced stitching to increase the durability of the footwear.



COUNTERFORT

The thermoplastic counterfort is responsible for structuring and is fundamental for stability while walking.



LINING

Footwear with internal lining made of highly abrasion-resistant material.

SOLE ERGONOMIC

Ergonomic dual-density polyurethane sole with rotation points to prevent twisting, adjustment area for work on ladders and scaffolding, and drainage channels.



MIDSOLE: Sturdier layer that comes into direct contact with the ground.

COMPACT: Harder layer that comes into direct contact with the ground.



COMPATIBLE WITH:

TOE CAP
COMPOSITE

ANTI-PENETRATION
INSOLE

COMFORT-E

THIS FOOTWEAR DOES NOT HAVE OTHER COLORS.

RETURN

WO10002

MICROFIBER



WO1002 BLACK/RED

SOLE ERGONOMIC

Ergonomic dual-density polyurethane sole with rotation points to prevent twisting, adjustment area for work on ladders and scaffolding, and drainage channels.



MIDSOLE: Sturdier layer that comes into direct contact with the ground.

COMPACT: Harder layer that comes into direct contact with the ground.



COMPATIBLE WITH:

TOE CAP
COMPOSITE

ANTI-PENETRATION
INSOLE

COMFORT-E



Microfiber MICRO-E offers::

- Sustainability as it is an ecological raw material.
- Lightweight, as it can be up to 40% lighter than leather.
- Resistance to liquid ingress.
- Flexibility, allowing it to adapt to the contour of the feet.
- Increased durability, being up to 30% more resistant than leather to tearing and abrasion.
- Extreme resistance against light chemicals such as cement, lime, oils, and grease.
- Easy to clean.



Footwear certified for use in electrician activities.



REINFORCED STITCHING

Reinforced stitching to increase the durability of the footwear.



COUNTERFORT

The thermoplastic counterfort is responsible for structuring and is fundamental for stability while walking.



LINING

Footwear with internal lining made of highly abrasion-resistant material.

THIS FOOTWEAR DOES NOT HAVE OTHER COLORS.

RETURN

WO1003

MICROFIBER



WO1003 BLACK/RED

SOLE ERGONOMIC

Ergonomic dual-density polyurethane sole with rotation points to prevent twisting, adjustment area for work on ladders and scaffolding, and drainage channels.



MIDSOLE: Sturdier layer that comes into direct contact with the ground.

COMPACT: Harder layer that comes into direct contact with the ground.

COMPATIBLE WITH:

TOE CAP
COMPOSITE

ANTI-PENETRATION
INSOLE

COMFORT-E

Microfiber MICRO-E offers::

- Sustainability as it is an ecological raw material.
- Lightweight, as it can be up to 40% lighter than leather.
- Resistance to liquid ingress.
- Flexibility, allowing it to adapt to the contour of the feet.
- Increased durability, being up to 30% more resistant than leather to tearing and abrasion.
- Extreme resistance against light chemicals such as cement, lime, oils, and grease.
- Easy to clean.



LACE CLOSURE

The closure is made with high-resistance laces.



COUNTERFORT

The thermoplastic counterfort is responsible for structuring and is fundamental for stability while walking.



LINING

Footwear with internal lining made of highly abrasion-resistant material.

THIS FOOTWEAR DOES NOT HAVE OTHER COLORS.



RETURN

WO1004

MICROFIBER



WO1004 BLACK/RED

SOLE ERGONOMIC

Ergonomic dual-density polyurethane sole with rotation points to prevent twisting, adjustment area for work on ladders and scaffolding, and drainage channels.



MIDSOLE: Sturdier layer that comes into direct contact with the ground.

COMPACT: Harder layer that comes into direct contact with the ground.



COMPATIBLE WITH:

TOE CAP
COMPOSITE

ANTI-PENETRATION
INSOLE

COMFORT-E



Microfiber MICRO-E offers::

- Sustainability as it is an ecological raw material.
- Lightweight, as it can be up to 40% lighter than leather.
- Resistance to liquid ingress.
- Flexibility, allowing it to adapt to the contour of the feet.
- Increased durability, being up to 30% more resistant than leather to tearing and abrasion.
- Extreme resistance against light chemicals such as cement, lime, oils, and grease.
- Easy to clean.



ABNT NBR 16603:2017
500 V - SEC0

Footwear certified for use in electrician activities.



LACE CLOSURE

The closure is made with high-resistance laces.



COUNTERFORT

The thermoplastic counterfort is responsible for structuring and is fundamental for stability while walking.



LINING

Footwear with internal lining made of highly abrasion-resistant material.

THIS FOOTWEAR DOES NOT HAVE OTHER COLORS.

RETURN

WO1009

MICROFIBER



Microfiber MICRO-E offers::

- Sustainability as it is an ecological raw material.
- Lightweight, as it can be up to 40% lighter than leather.
- Resistance to liquid ingress.
- Flexibility, allowing it to adapt to the contour of the feet.
- Increased durability, being up to 30% more resistant than leather to tearing and abrasion.
- Extreme resistance against light chemicals such as cement, lime, oils, and grease.
- Easy to clean.



WO1009 BLACK/GREY



REINFORCED STITCHING

Reinforced stitching to increase the durability of the footwear.



METATARSUS

Metatarsal protector made of thermoplastic material covered with leather.



LINING

Footwear with internal lining made of highly abrasion-resistant material.

SOLE ERGONOMIC

Ergonomic dual-density polyurethane sole with rotation points to prevent twisting, adjustment area for work on ladders and scaffolding, and drainage channels.



MIDSOLE: Sturdier layer that comes into direct contact with the ground.

COMPACT: Harder layer that comes into direct contact with the ground.



COMPATIBLE WITH:

TOE CAP
COMPOSITE

ANTI-PENETRATION
INSOLE

COMFORT-E

THIS FOOTWEAR DOES NOT HAVE OTHER COLORS.

RETURN



ENERGY

RETURN

www.juldercusa.com - contacto@julderc.com - +1 (321) 284-9412



EN1002

MICROFIBER



EN1002 BLACK/GREY

SOLE ERGONOMIC

Ergonomic dual-density polyurethane sole with rotation points to prevent twisting, adjustment area for work on ladders and scaffolding, and drainage channels.



MIDSOLE: Sturdier layer that comes into direct contact with the ground.

COMPACT: Harder layer that comes into direct contact with the ground.



COMPATIBLE WITH:

TOE CAP
COMPOSITE

ANTI-PENETRATION
INSOLE

COMFORT-E

Microfiber MICRO-E offers::

- Sustainability as it is an ecological raw material.
- Lightweight, as it can be up to 40% lighter than leather.
- Resistance to liquid ingress.
- Flexibility, allowing it to adapt to the contour of the feet.
- Increased durability, being up to 30% more resistant than leather to tearing and abrasion.
- Extreme resistance against light chemicals such as cement, lime, oils, and grease.
- Easy to clean.



ABNT NBR 16603:2017
500 V - SEC0

Footwear certified for use in electrician activities.



AEROGEL

Technology that ensures comfort, not only through its softness but also through its moisture absorption and temperature control system inside the footwear.



COUNTERFORT

The thermoplastic counterfort is responsible for structuring and is fundamental for stability while walking.



FAST-CLOSE

In addition to being a quick closure system, Fast-Close allows for the ideal fit for any foot shape.

AVAILABLE IN THE COLORS:



EN1002 BLACK/PINK



EN1002 BLACK/BLUE



EN1002 BLACK/RED

RETURN

EN1007

MICROFIBER



EN1007 BLACK/RED

SOLE ERGONOMIC

Ergonomic dual-density polyurethane sole with rotation points to prevent twisting, adjustment area for work on ladders and scaffolding, and drainage channels.



MIDSOLE: Sturdier layer that comes into direct contact with the ground.

COMPACT: Harder layer that comes into direct contact with the ground.

COMPATIBLE WITH:

TOE CAP
COMPOSITE

ANTI-PENETRATION
INSOLE

COMFORT-E

Microfiber MICRO-E offers::

- Sustainability as it is an ecological raw material.
- Lightweight, as it can be up to 40% lighter than leather.
- Resistance to liquid ingress.
- Flexibility, allowing it to adapt to the contour of the feet.
- Increased durability, being up to 30% more resistant than leather to tearing and abrasion.
- Extreme resistance against light chemicals such as cement, lime, oils, and grease.
- Easy to clean.



AERO-ISOLATOR 3D

Technology that ensures comfort, not only through its softness but also through its moisture absorption and temperature control system inside the footwear.



COUNTERFORT

The thermoplastic counterfort is responsible for structuring and is fundamental for stability while walking.



LACE CLOSURE

The closure is made with high-resistance laces.

AVAILABLE IN THE COLORS:



EN1007 BLACK/BLUE



EN1007 BLACK/GREY



EN1007 BLACK/PINK

RETURN

EN1014

MICROFIBER



EN1014 BLACK/GREY

SOLE ERGONOMIC

Ergonomic dual-density polyurethane sole with rotation points to prevent twisting, adjustment area for work on ladders and scaffolding, and drainage channels.



MIDSOLE: Sturdier layer that comes into direct contact with the ground.

COMPACT: Harder layer that comes into direct contact with the ground.

COMPATIBLE WITH:

TOE CAP
COMPOSITE

ANTI-PENETRATION
INSOLE

COMFORT-E

Microfiber MICRO-E offers::

- Sustainability as it is an ecological raw material.
- Lightweight, as it can be up to 40% lighter than leather.
- Resistance to liquid ingress.
- Flexibility, allowing it to adapt to the contour of the feet.
- Increased durability, being up to 30% more resistant than leather to tearing and abrasion.
- Extreme resistance against light chemicals such as cement, lime, oils, and grease.
- Easy to clean.



ABNT NBR 16603:2017
500 V - SEC0

Footwear certified for use in electrician activities.



AEROFACER 3D

Technology that ensures comfort, not only through its softness but also through its moisture absorption and temperature control system inside the footwear.



COUNTERFORT

The thermoplastic counterfort is responsible for structuring and is fundamental for stability while walking.



LACE CLOSURE

The closure is made with high-resistance laces.

AVAILABLE IN THE COLORS:



EN1014 BLACK/BLUE

RETURN

WIND

MICROFIBER

WIDENED SHAFT
TO HELP PREVENT
TWISTS



WIND BLACK/GREY

SOLE ERGONOMIC

Ergonomic dual-density polyurethane sole with rotation points to prevent twisting, adjustment area for work on ladders and scaffolding, and drainage channels.



MIDSOLE: Sturdier layer that comes into direct contact with the ground.

COMPACT: Harder layer that comes into direct contact with the ground.

COMPATIBLE WITH:

TOE CAP
COMPOSITE

ANTI-PENETRATION
INSOLE

COMFORT-E

Microfiber MICRO-E offers::

- Sustainability as it is an ecological raw material.
- Lightweight, as it can be up to 40% lighter than leather.
- Resistance to liquid ingress.
- Flexibility, allowing it to adapt to the contour of the feet.
- Increased durability, being up to 30% more resistant than leather to tearing and abrasion.
- Extreme resistance against light chemicals such as cement, lime, oils, and grease.
- Easy to clean.



ABNT NBR 16603:2017
500 V - SEC0

Footwear certified for use in electrician activities.



AEROSPACE 3D

Technology that ensures comfort, not only through its softness but also through its moisture absorption and temperature control system inside the footwear.



COUNTERFORT

The thermoplastic counterfort is responsible for structuring and is fundamental for stability while walking.



LACE CLOSURE

The closure is made with high-resistance laces.



**FOOTWEAR TESTED AND
APPROVED FOR USE
IN WIND FARMS.**

THIS FOOTWEAR DOES NOT HAVE OTHER COLORS.

RETURN

MANOB

MICROFIBER

WIDENED SHAFT
TO HELP PREVENT
TWISTS



MANOB BLACK/GREY

SOLE ERGONOMIC

Ergonomic dual-density polyurethane sole with rotation points to prevent twisting, adjustment area for work on ladders and scaffolding, and drainage channels.



MIDSOLE: Sturdier layer that comes into direct contact with the ground.

COMPACT: Harder layer that comes into direct contact with the ground.

COMPATIBLE WITH:

TOE CAP
COMPOSITE

ANTI-PENETRATION
INSOLE

COMFORT-E

Microfiber MICRO-E offers::

- Sustainability as it is an ecological raw material.
- Lightweight, as it can be up to 40% lighter than leather.
- Resistance to liquid ingress.
- Flexibility, allowing it to adapt to the contour of the feet.
- Increased durability, being up to 30% more resistant than leather to tearing and abrasion.
- Extreme resistance against light chemicals such as cement, lime, oils, and grease.
- Easy to clean.



ABNT NBR 16603:2017
500 V - SEC0

Footwear certified for use in electrician activities.



AEROSPACE 3D

Technology that ensures comfort, not only through its softness but also through its moisture absorption and temperature control system inside the footwear.



COUNTERFORT

The thermoplastic counterfort is responsible for structuring and is fundamental for stability while walking.



LACE CLOSURE

The closure is made with high-resistance laces.



**FOOTWEAR TESTED AND
APPROVED FOR USE
IN MINING.**

THIS FOOTWEAR DOES NOT HAVE OTHER COLORS.

RETURN

HYBRID

RETURN

www.juldercusa.com - contacto@julderc.com - +1 (321) 284-9412

 **JULDERC**
USA LLC

HB10000

MOVE



HB1000 BLACK



DRY-E

The DRY-E technology consists of a high-resistance fabric that, in addition to providing protection, prevents sweat, overheating, and discomfort in the feet. This material is used in the world's leading high-performance footwear.



LINING

Footwear with internal lining made of highly abrasion-resistant material.



PROTECTIVE TOE CAP

Maximum protection against falling objects



LACE CLOSURE

The closure is made with high-resistance laces.

SOLE HYBRID

Dual-density ergonomic polyurethane sole with impact absorption system, adjustment area or work on ladders and scaffolding, and drainage channels.



MIDSOLE: Sturdier layer that comes into direct contact with the ground.

COMPACT: Harder layer that comes into direct contact with the ground.



AVAILABLE IN THE COLORS:



HB1000 GREY



HB1000 PINK



HB1000 BLUE



HB1000 BROWN

COMPATIBLE WITH:

TOE CAP
COMPOSITE

COMFORT-E

RETURN

HB2000

NANO

DRY-E

The DRY-E technology consists of a high-resistance fabric that, in addition to providing protection, prevents sweat, overheating, and discomfort in the feet. This material is used in the world's leading high-performance footwear.



HB2000 GREY



LINING

Footwear with internal lining made of highly abrasion-resistant material.



PROTECTIVE TOE CAP

Maximum protection against falling objects



LACE CLOSURE

The closure is made with high-resistance laces.

SOLE HYBRID

Dual-density ergonomic polyurethane sole with impact absorption system, adjustment area or work on ladders and scaffolding, and drainage channels.



MIDSOLE: Sturdier layer that comes into direct contact with the ground.

COMPACT: Harder layer that comes into direct contact with the ground.



COMPATIBLE WITH:

TOE CAP
COMPOSITE

COMFORT-E

AVAILABLE IN THE COLORS:



HB2000 SAND

RETURN

HB30000

SMART

DRY-E

The DRY-E technology consists of a high-resistance fabric that, in addition to providing protection, prevents sweat, overheating, and discomfort in the feet. This material is used in the world's leading high-performance footwear.



HB3000 BROWN



LINING

Footwear with internal lining made of highly abrasion-resistant material.



PROTECTIVE TOE CAP

Maximum protection against falling objects



LACE CLOSURE

The closure is made with high-resistance laces.

SOLE HYBRID

Dual-density ergonomic polyurethane sole with impact absorption system, adjustment area or work on ladders and scaffolding, and drainage channels.



MIDSOLE: Sturdier layer that comes into direct contact with the ground.

COMPACT: Harder layer that comes into direct contact with the ground.



COMPATIBLE WITH:

TOE CAP
COMPOSITE

COMFORT-E

AVAILABLE IN THE COLORS:



HB3000 BLACK



HB3000 PINK

RETURN

HB4000

FUTURE



HB4000 BLACK

DRY-E

The DRY-E technology consists of a high-resistance fabric that, in addition to providing protection, prevents sweat, overheating, and discomfort in the feet. This material is used in the world's leading high-performance footwear.



LINING

Footwear with internal lining made of highly abrasion-resistant material.



PROTECTIVE TOE CAP

Maximum protection against falling objects



LACE CLOSURE

The closure is made with high-resistance laces.

SOLE HYBRID

Dual-density ergonomic polyurethane sole with impact absorption system, adjustment area or work on ladders and scaffolding, and drainage channels.



MIDSOLE: Sturdier layer that comes into direct contact with the ground.

COMPACT: Harder layer that comes into direct contact with the ground.



COMPATIBLE WITH:

TOE CAP
COMPOSITE

COMFORT-E

AVAILABLE IN THE COLORS:



HB4000 BROWN



HB4000 PINK

RETURN

HB5000

FOCUS



HB5000 GREY



DRY-E

The DRY-E technology consists of a high-resistance fabric that, in addition to providing protection, prevents sweat, overheating, and discomfort in the feet. This material is used in the world's leading high-performance footwear.



LINING

Footwear with internal lining made of highly abrasion-resistant material.



PROTECTIVE TOE CAP

Maximum protection against falling objects



LACE CLOSURE

The closure is made with high-resistance laces.

SOLE HYBRID

Dual-density ergonomic polyurethane sole with impact absorption system, adjustment area or work on ladders and scaffolding, and drainage channels.



MIDSOLE: Sturdier layer that comes into direct contact with the ground.

COMPACT: Harder layer that comes into direct contact with the ground.



COMPATIBLE WITH:

TOE CAP
COMPOSITE

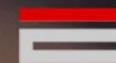
COMFORT-E

AVAILABLE IN THE COLORS:



HB5000 BLUE

RETURN



AIR POWER

RETURN

AP1009

LEATHER VICKING

**WIDENED SHAFT
TO HELP PREVENT
TWISTS**

AP1009 BLACK



**SOLE
ERGONOMIC**

Ergonomic dual-density polyurethane sole with rotation points to prevent twisting, adjustment area for work on ladders and scaffolding, and drainage channels.



MIDSOLE: Sturdier layer that comes into direct contact with the ground.

COMPACT: Harder layer that comes into direct contact with the ground.

COMPATIBLE WITH:

TOE CAP
COMPOSITE

**ANTI-PENETRATION
INSOLE**

COMFORT-E



PREMIUM LEATHER:

The main raw material of this footwear, relaxed embossed leather, is responsible for ensuring durability and resistance. We invest heavily in the selection and finishing of the leathers used in the production of our safety shoes.



Footwear certified for use in electrician activities.



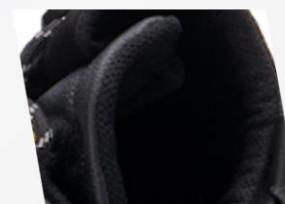
QUICK RELEASE

Equipped with quick extraction system



LACE CLOSURE

The closure is made with high-resistance laces.



LINING

Footwear with internal lining made of highly abrasion-resistant material.

THIS FOOTWEAR DOES NOT HAVE OTHER COLORS.

RETURN

AP1009

LEATHER VICKING - VELCRO

WIDENED SHAFT
TO HELP PREVENT
TWISTS



AP1009 VELCRO BLACK

SOLE ERGONOMIC

Ergonomic dual-density polyurethane sole with rotation points to prevent twisting, adjustment area for work on ladders and scaffolding, and drainage channels.



MIDSOLE: Sturdier layer that comes into direct contact with the ground.

COMPACT: Harder layer that comes into direct contact with the ground.



COMPATIBLE WITH:

TOE CAP
COMPOSITE

ANTI-PENETRATION
INSOLE

COMFORT-E



PREMIUM LEATHER:

The main raw material of this footwear, relaxed embossed leather, is responsible for ensuring durability and resistance. We invest heavily in the selection and finishing of the leathers used in the production of our safety shoes.



Footwear certified for use in electrician activities.



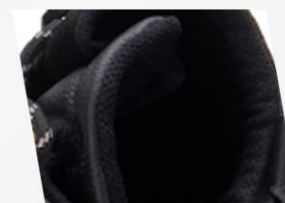
QUICK RELEASE

Equipped with quick extraction system



VELCRO

Padded tongue and Velcro closure.



LINING

Footwear with internal lining made of highly abrasion-resistant material.

THIS FOOTWEAR DOES NOT HAVE OTHER COLORS.

RETURN



RETURN

ESD

www.juldercusa.com - contacto@julderc.com - +1 (321) 284-9412



EN1002A

MICROFIBER



EN1002A BLACK/GREY

SOLE ERGONOMIC

Ergonomic dual-density polyurethane sole with rotation points to prevent twisting, adjustment area for work on ladders and scaffolding, and drainage channels.



MIDSOLE: Sturdier layer that comes into direct contact with the ground.

COMPACT: Harder layer that comes into direct contact with the ground.



Microfiber MICRO-E offers::

- Sustainability as it is an ecological raw material.
- Lightweight, as it can be up to 40% lighter than leather.
- Resistance to liquid ingress.
- Flexibility, allowing it to adapt to the contour of the feet.
- Increased durability, being up to 30% more resistant than leather to tearing and abrasion.
- Extreme resistance against light chemicals such as cement, lime, oils, and grease.
- Easy to clean.



Footwear with static energy dissipation technology. Ideal for those who work with sensitive electronic equipment and in environments with flammable atmospheres.



AEROSPACER 3D

Technology that ensures comfort, not only through its softness but also through its moisture absorption and temperature control system inside the footwear.



COUNTERFORT

The thermoplastic counterfort is responsible for structuring and is fundamental for stability while walking.



FAST-CLOSE

In addition to being a quick closure system, Fast-Close allows for the ideal fit for any foot shape.

AVAILABLE IN THE COLORS:



EN1002A BLACK/BLUE



EN1002A BLACK/PINK



EN1002A BLACK/RED

COMPATIBLE WITH:

TOE CAP
COMPOSITE

COMFORT-E

RETURN

WO1001A

LEATHER RELAX



WO1001A BLACK

**PREMIUM LEATHER:**

The main raw material of this footwear, relaxed embossed leather, is responsible for ensuring durability and resistance. We invest heavily in the selection and finishing of the leathers used in the production of our safety shoes.



Footwear with static energy dissipation technology. Ideal for those who work with sensitive electronic equipment and in environments with flammable atmospheres.

**REINFORCED STITCHING**

Reinforced stitching to increase the durability of the footwear.

**COUNTERFORT**

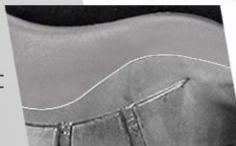
The thermoplastic counterfort is responsible for structuring and is fundamental for stability while walking.

**LINING**

Footwear with internal lining made of highly abrasion-resistant material.

SOLE ERGONOMIC

Ergonomic dual-density polyurethane sole with rotation points to prevent twisting, adjustment area for work on ladders and scaffolding, and drainage channels.



MIDSOLE: Sturdier layer that comes into direct contact with the ground.

COMPACT: Harder layer that comes into direct contact with the ground.

COMPATIBLE WITH:TOE CAP
COMPOSITE

COMFORT-E

THIS FOOTWEAR DOES NOT HAVE OTHER COLORS.

RETURN



ADVENTURE

RETURN

AD6000

LEATHER NOBUCK



AD8000 BROWN



PREMIUM LEATHER:

The main raw material of this footwear, relaxed embossed leather, is responsible for ensuring durability and resistance. We invest heavily in the selection and finishing of the leathers used in the production of our safety shoes.



LACE CLOSURE

The closure is made with high-resistance laces.



COUNTERFORT

The thermoplastic counterfort is responsible for structuring and is fundamental for stability while walking.



LINING

Footwear with internal lining made of highly abrasion-resistant material.

FLEXMOTION

Outsole made of high-resistance rubber and EVA midsole forming an extremely efficient impact absorption system.



MIDSOLE: Soft EVA layer to provide comfort.

COMPACT: Durable rubber layer for direct contact with the ground.

COMPATIBLE WITH:



THIS FOOTWEAR DOES NOT HAVE OTHER COLORS.



RETURN

AD8000

LEATHER NOBUCK



AD8000 PEANUT



PREMIUM LEATHER:

The main raw material of this footwear, relaxed embossed leather, is responsible for ensuring durability and resistance. We invest heavily in the selection and finishing of the leathers used in the production of our safety shoes.



LACE CLOSURE

The closure is made with high-resistance laces.



COUNTERFORT

The thermoplastic counterfort is responsible for structuring and is fundamental for stability while walking.



LINING

Footwear with internal lining made of highly abrasion-resistant material.

FLEXMOTION

Outsole made of high-resistance rubber and EVA midsole forming an extremely efficient impact absorption system.



MIDSOLE: Soft EVA layer to provide comfort.

COMPACT: Durable rubber layer for direct contact with the ground.

COMPATIBLE WITH:



THIS FOOTWEAR DOES NOT HAVE OTHER COLORS.



RETURN

AD9000

LEATHER NOBUCK



AD9000 DARK SAPPHIRE



PREMIUM LEATHER:

The main raw material of this footwear, relaxed embossed leather, is responsible for ensuring durability and resistance. We invest heavily in the selection and finishing of the leathers used in the production of our safety shoes.



LACE CLOSURE

The closure is made with high-resistance laces.



COUNTERFORT

The thermoplastic counterfort is responsible for structuring and is fundamental for stability while walking.



LINING

Footwear with internal lining made of highly abrasion-resistant material.

FLEXMOTION

Outsole made of high-resistance rubber and EVA midsole forming an extremely efficient impact absorption system.



MIDSOLE: Soft EVA layer to provide comfort.

COMPACT: Durable rubber layer for direct contact with the ground.

COMPATIBLE WITH:



AVAILABLE IN THE COLORS:



AD9000 BLACK

RETURN

TK4000

LEATHER NOBUCK



TK4000 BROWN



PREMIUM LEATHER:

The main raw material of this footwear, relaxed embossed leather, is responsible for ensuring durability and resistance. We invest heavily in the selection and finishing of the leathers used in the production of our safety shoes.



LACE CLOSURE

The closure is made with high-resistance laces.



COUNTERFORT

The thermoplastic counterfort is responsible for structuring and is fundamental for stability while walking.



LINING

Footwear with internal lining made of highly abrasion-resistant material.

FLEXMOTION

Outsole made of high-resistance rubber and EVA midsole forming an extremely efficient impact absorption system.



MIDSOLE: Soft EVA layer to provide comfort.

COMPACT: Durable rubber layer for direct contact with the ground.

COMPATIBLE WITH:



THIS FOOTWEAR DOES NOT HAVE OTHER COLORS.



RETURN

TK6000

LEATHER NOBUCK



TK6000 DARK BROWN



PREMIUM LEATHER:

The main raw material of this footwear, relaxed embossed leather, is responsible for ensuring durability and resistance. We invest heavily in the selection and finishing of the leathers used in the production of our safety shoes.



LACE CLOSURE

The closure is made with high-resistance laces.



COUNTERFORT

The thermoplastic counterfort is responsible for structuring and is fundamental for stability while walking.



LINING

Footwear with internal lining made of highly abrasion-resistant material.

FLEXMOTION

Outsole made of high-resistance rubber and EVA midsole forming an extremely efficient impact absorption system.



MIDSOLE: Soft EVA layer to provide comfort.

COMPACT: Durable rubber layer for direct contact with the ground.

COMPATIBLE WITH:



THIS FOOTWEAR DOES NOT HAVE OTHER COLORS.



RETURN

TK9000

LEATHER NOBUCK



TK9000 BROWN



PREMIUM LEATHER:

The main raw material of this footwear, relaxed embossed leather, is responsible for ensuring durability and resistance. We invest heavily in the selection and finishing of the leathers used in the production of our safety shoes.



LACE CLOSURE

The closure is made with high-resistance laces.



COUNTERFORT

The thermoplastic counterfort is responsible for structuring and is fundamental for stability while walking.



LINING

Footwear with internal lining made of highly abrasion-resistant material.

FLEXMOTION

Outsole made of high-resistance rubber and EVA midsole forming an extremely efficient impact absorption system.



MIDSOLE: Soft EVA layer to provide comfort.

COMPACT: Durable rubber layer for direct contact with the ground.

COMPATIBLE WITH:



THIS FOOTWEAR DOES NOT HAVE OTHER COLORS.



RETURN

TK7000



TK7000 POTTING SOIL



PREMIUM LEATHER:

The main raw material of this footwear, relaxed embossed leather, is responsible for ensuring durability and resistance. We invest heavily in the selection and finishing of the leathers used in the production of our safety shoes.



LACE CLOSURE

The closure is made with high-resistance laces.



COUNTERFOOT

The thermoplastic counterfoot is responsible for structuring and is fundamental for stability while walking.



LINING

Footwear with internal lining made of highly abrasion-resistant material.

FLEXMOTION

Outsole made of high-resistance rubber and EVA midsole forming an extremely efficient impact absorption system.



MIDSOLE: Soft EVA layer to provide comfort.

COMPACT: Durable rubber layer for direct contact with the ground.



COMPATIBLE WITH:



AVAILABLE IN THE COLORS:



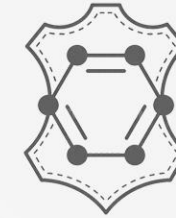
TK7000 BLACK

RETURN

TK7000 SPECIAL



TK7000 SPECIAL



SYNTHETIC:

High-performance synthetic material with carbon fiber texture.



LACE CLOSURE

The closure is made with high-resistance laces.



COUNTERFORT

The thermoplastic counterfort is responsible for structuring and is fundamental for stability while walking.



LINING

Footwear with internal lining made of highly abrasion-resistant material.

FLEXMOTION

Outsole made of high-resistance rubber and EVA midsole forming an extremely efficient impact absorption system.



MIDSOLE: Soft EVA layer to provide comfort.

COMPACT: Durable rubber layer for direct contact with the ground.



COMPATIBLE WITH:



THIS FOOTWEAR DOES NOT HAVE OTHER COLORS.

RETURN

